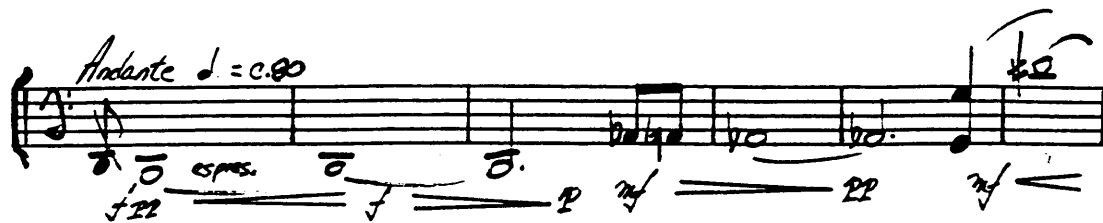


JOHN YANNELLI



FANTASY FOR SOLO CELLO

1982

Virtuoso Editions 88012

~~Sounds~~ **Spells**
Productions

Rhinebeck, New York 12572

Allegro Agitato (♩ = 120 - 132)

Handwritten musical score for the first section. It consists of seven staves of music. The first staff begins with a forte fortissimo (*ff*) dynamic and includes a *Cresc.* marking. The music is characterized by rapid sixteenth-note passages, often with slurs and accents. Fingerings (1-5) and breath marks (v) are indicated throughout. The tempo is marked *Allegro Agitato* with a metronome marking of 120-132. The key signature has one sharp (F#).

con molto Rall

Handwritten musical score for the second section, starting with a *con molto Rall* marking. This section is significantly slower than the first. It features fewer notes per measure, with some rests and longer note values. The dynamics are more varied, including *mf* and *f*. The tempo is marked *meno mosso*.

meno mosso

Handwritten musical score for the third section, starting with a *meno mosso* marking. This section includes specific performance instructions: *pizz* (pizzicato), *SNAP*, and *ARCO* (arco). The music continues with a mix of rhythmic patterns, including triplets and slurs. Dynamics range from *p* to *f*. The tempo remains *meno mosso*.

3.

3.

Andante Expressivo ♩ = 88-108

Handwritten musical score for a piece titled "Andante Expressivo" with a tempo of 88-108. The score consists of six staves of music. The first staff is in bass clef with a 3/4 time signature, featuring a piano (p) dynamic and a triplet of eighth notes. The second staff continues in bass clef with a piano (p) dynamic and a triplet of eighth notes. The third staff is in bass clef with a piano (p) dynamic and a triplet of eighth notes. The fourth staff is in bass clef with a piano (p) dynamic and a triplet of eighth notes. The fifth staff is in treble clef with a piano (p) dynamic and a triplet of eighth notes. The sixth staff is in bass clef with a piano (p) dynamic and a triplet of eighth notes. The score includes various musical notations such as dynamics (p, f, cresc. f.), articulation (accents, slurs), and time signature changes (3/4, 2/4, 4/4).

Soundspeaks
Productions
 Rhinebeck, New York 12572